

Teacher Package Science & Technology

Grades 1-3

An Exploration of Egg Farming

INCLUDED IN THIS PACKAGE:

- **Before your visit:**
 - Fun Facts about chickens
 - Lesson Plan and Classroom Activity Presented by AgScape and Egg Farmers of Ontario
 - Egg Anatomy! Worksheets and Digital Learning Activity Presented with Egg Farmers of Ontario
- **At The Fair:**
 - Activities for your students to complete at The Fair
 - Life cycle of the egg
 - Label the parts of the chicken
 - Math - how many eggs did the chicken lay?

Presented with:



 schoolgroups@royalfair.org

FUN FACTS

Fun Facts

- Research suggests that chickens might be living descendants of dinosaurs.
- Chickens have better colour vision than humans.
- Some studies show that chickens have great memories.
- Chickens love to perch, scratch, and huddle in small groups!
- Experts think that hens teach their chicks sounds while they're still in the egg.

Egg Anatomy! Digital Learning Activity



EGG ANATOMY!
Learn about the parts of an egg.

Brought to you by:

The Royal
AGRICULTURAL WINTER FAIR

 **get cracking.**
Egg Farmers of Ontario


FOR EDUCATORS START

**Online
Education
Centre**

Presented with:



EGGANATOMY

A STUDY IN GOODNESS



SHELL

- Nature's perfect package.
- The egg's first line of defense against the entry of bacteria.
- Can be brown or white, depending on the breed of hen; nutritional value is the same.
- Approximately 10,000 tiny pores allow moisture and gases in and out.
- Odors can be absorbed through the shell, so eggs should be stored in their carton and always in the refrigerator.

SHELL MEMBRANE

- There are two membranes on the inside of the shell: outer and inner.
- One membrane sticks to the shell and one surrounds the albumen.
- The egg's second line of defense against bacteria.

ALBUMEN

- Albumen is the egg white.
- There are two layers: thick and thin albumen.
- Mostly made of water, high quality protein and some minerals.
- Represents 2/3 of the egg's weight.
- When a fresh egg is broken, the thick albumen stands up firmly around the yolk.

AIR CELL

- Formed on the wide end of the egg as it cools after being laid.
- The fresher the egg, the smaller the air cell.

GERMINAL DISC

- Appears on a slight depression of the yolk's surface.
- The entry for the fertilization of the egg.

YOLK MEMBRANE (Vitellic Membrane)

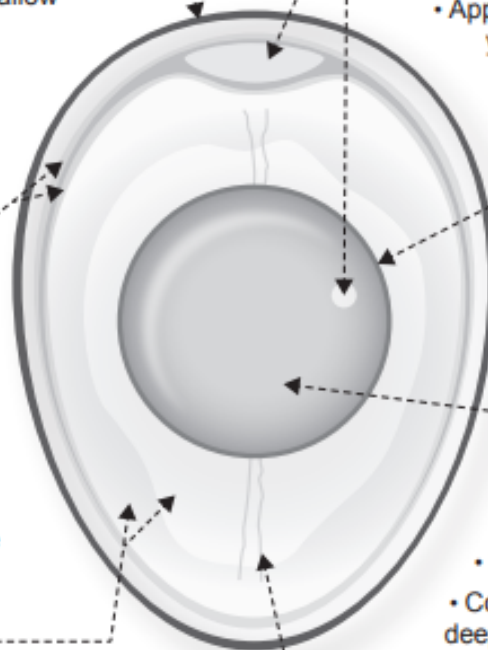
- Surrounds and holds the yolk.
- The fresher the egg, the stronger the membrane.

YOLK

- The egg's major source of vitamins and minerals, including protein and essential fatty acids.
- Represents 1/3 of the egg's weight.
- Colour ranges from the light yellow to deep orange, depending on the hen's food; nutritional value is the same.

CHALAZA

- A pair of spiral bands that anchor the yolk in the centre of the thick albumen.
- The fresher the egg, the more prominent the chalaza.



QUIZ

Quiz T/F

1. Hens only eat grains.
2. Hens make a clucking sound.
3. Hens are herbivores.
4. Hens run very slowly.
5. A baby hen is called a pullet
6. There is only 1 type of hen housing
7. Hens cannot see colours as well as humans.
8. The longest recorded flight of a hen was 10 seconds.
9. Hens like to play.
10. A group of hens is called a flock.

Answers: 1=F, 2=T, 3=F, 4=F, 5=T, 6=F, 7=F, 8=F, 9=T, 10=T

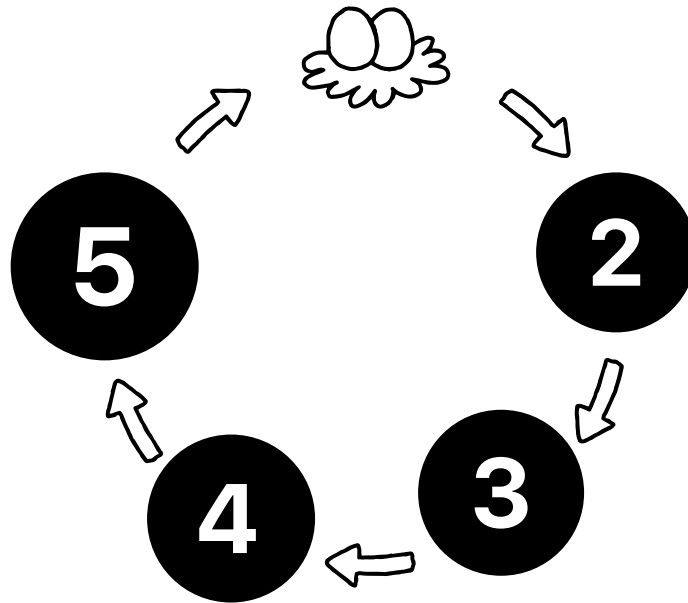
Presented with:



THE CHICKEN LIFE CYCLE

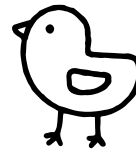
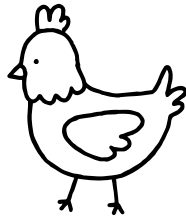
Name: _____ Date: _____

Number the pictures in the correct order.

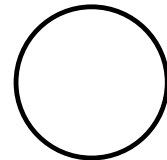
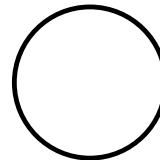
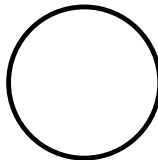
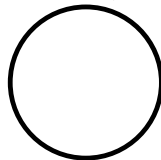


Name

		Egg Oeuf		
--	--	-------------	--	--



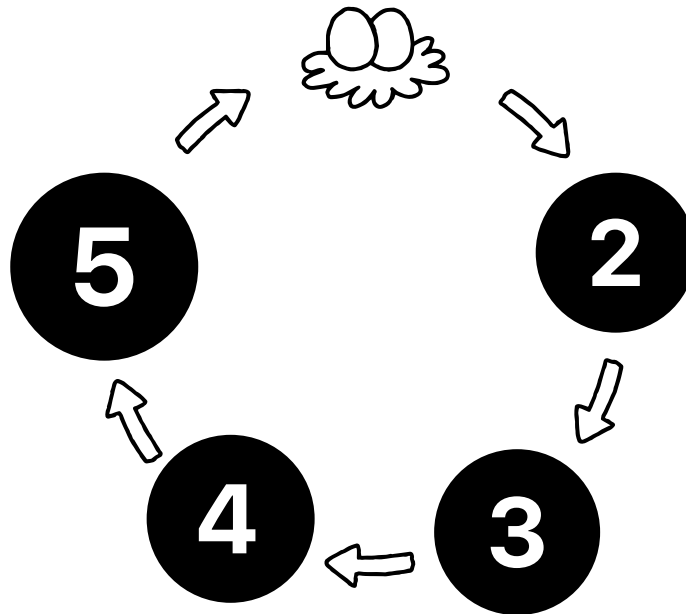
Number



Note: eggs in store DO NOT contain embryos

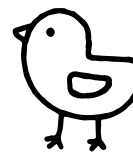
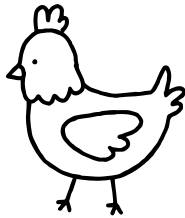
Presented with:

ANSWERS/RÉPONSES



Name/Nom

Hen Poulet adulte	Hatching Éclosion	Egg Oeuf	Poulet Poussin	Embryo Embryon
----------------------	----------------------	-------------	-------------------	-------------------

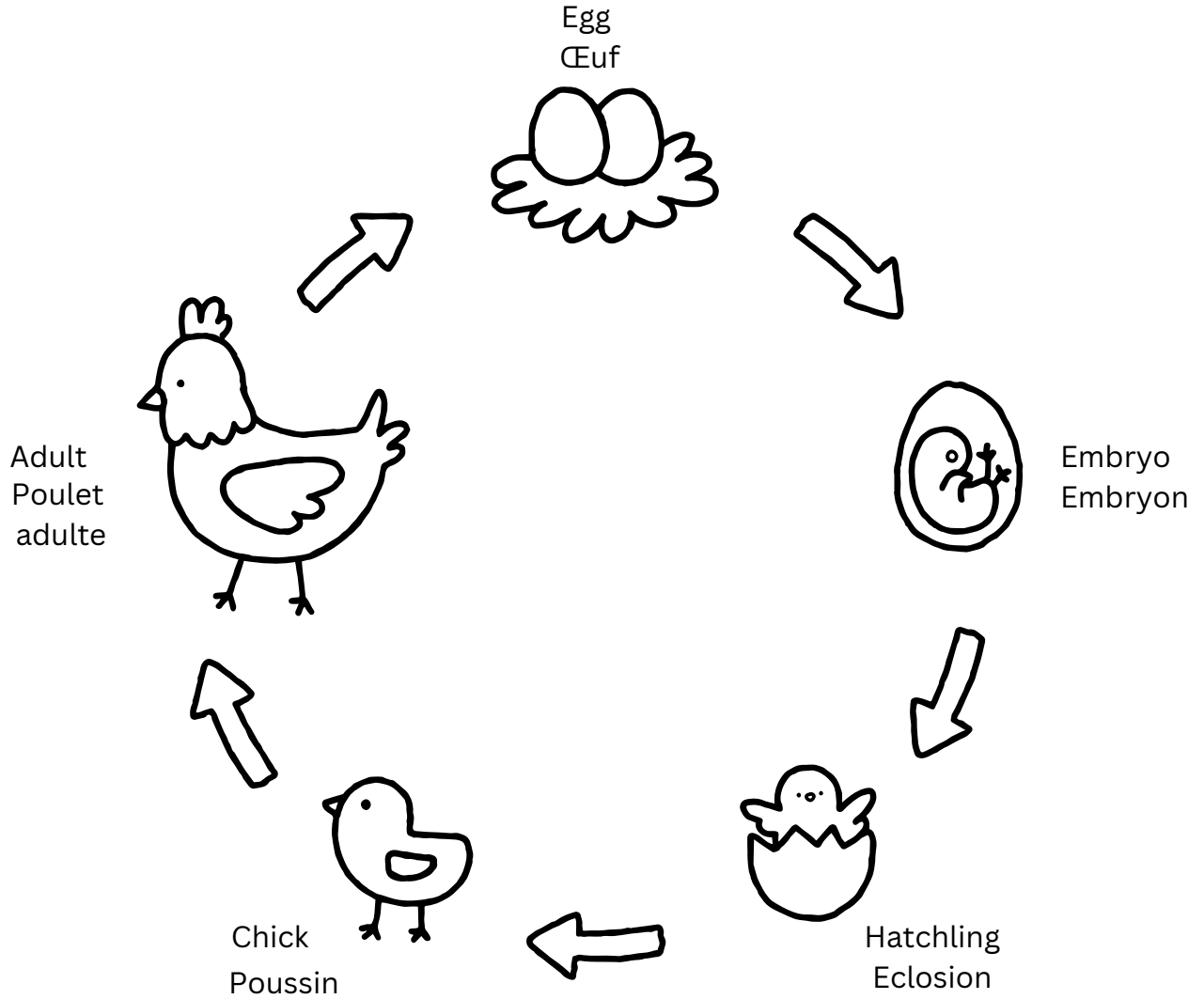


Number/Numéro



Presented with:

THE CHICKEN LIFE CYCLE LE CYCLE DE VIE D'UNE POULE



Presented with:

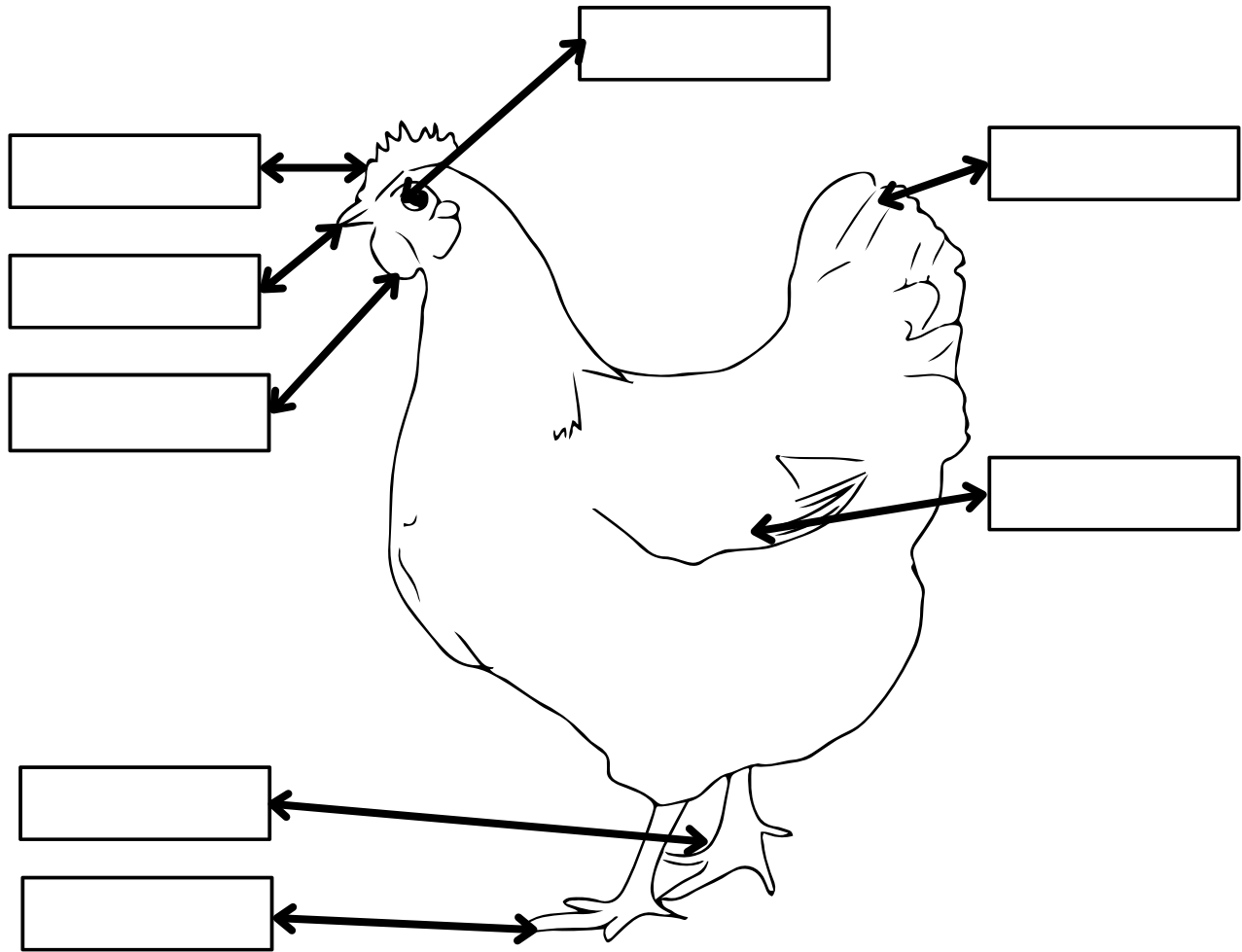


Anatomy

Name: _____

Date: _____

Label the parts of the hen.

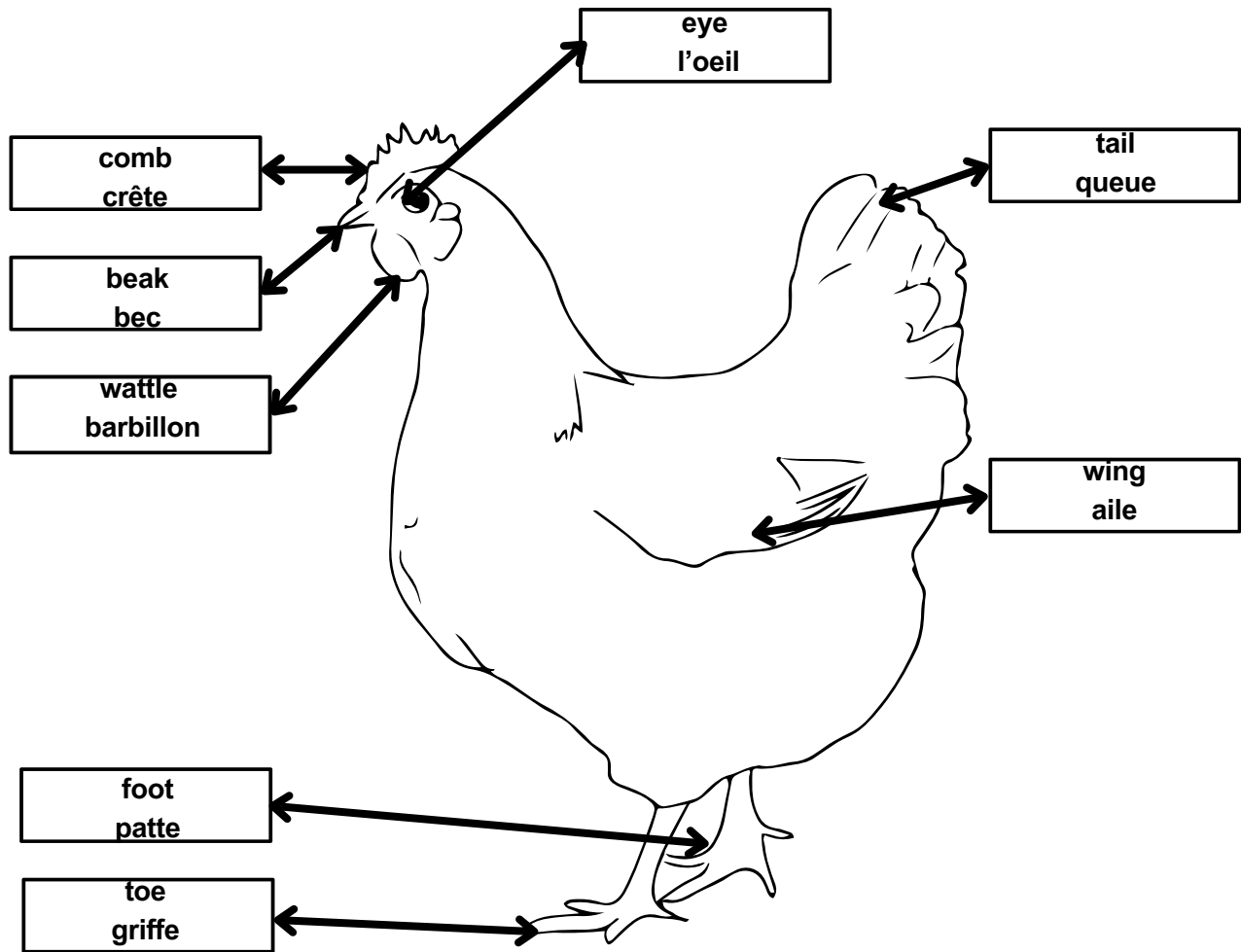


beak comb tail wing wattle toe eye foot

Presented with:



ANSWERS/RÉPONSES



Présentées par :



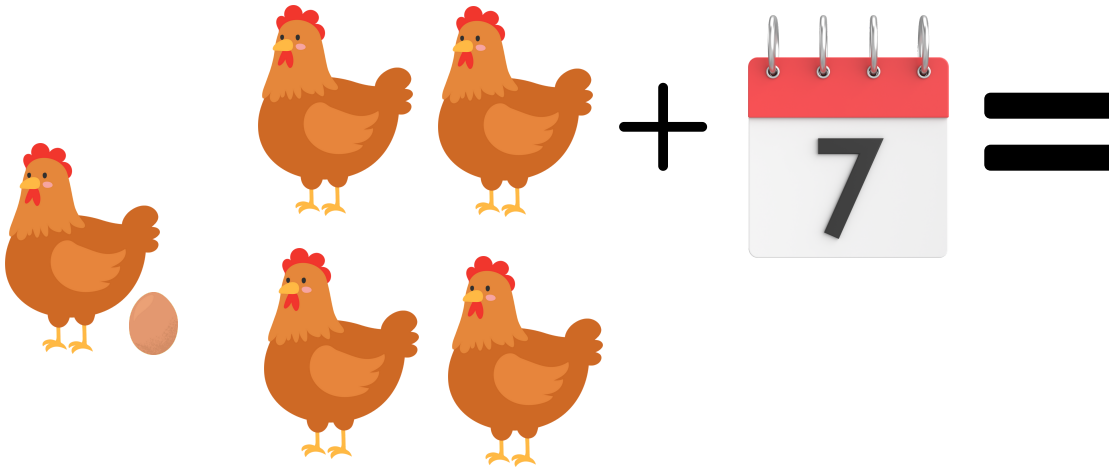
Egg Counter - Math Problems

Name: _____

Date: _____

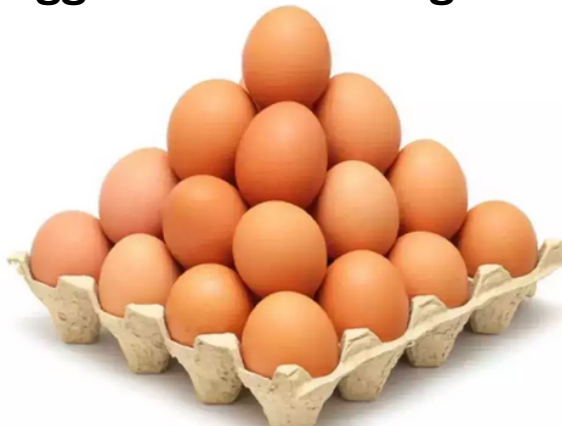
1

If a chicken lays 1 egg per day, how many eggs will you have at the end of 7 days if you have 4 chickens?



2

How many eggs are in this image?

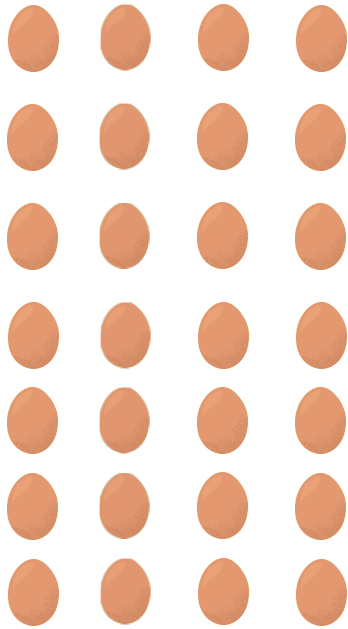


Presented with:



ANSWERS/RÉPONSES

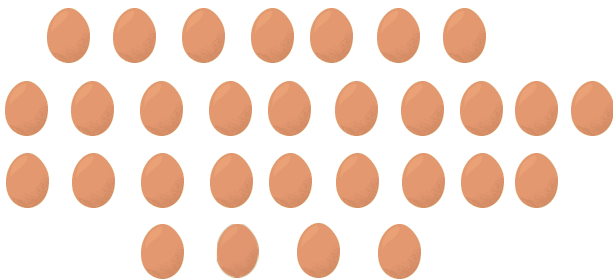
1



=

28

2



=

30

Présentées par :

