



TEACHER INFORMATION PACKAGE

THE CLASSROOM IS HERE

NOVEMBER 7 - 16, 2025
EXHIBITION PLACE, TORONTO

**LEARN MORE &
REGISTER YOUR AT:**
royalfair.org/education

STAY IN THE KNOW:
royalfair.org/teachernews

TABLE OF CONTENTS

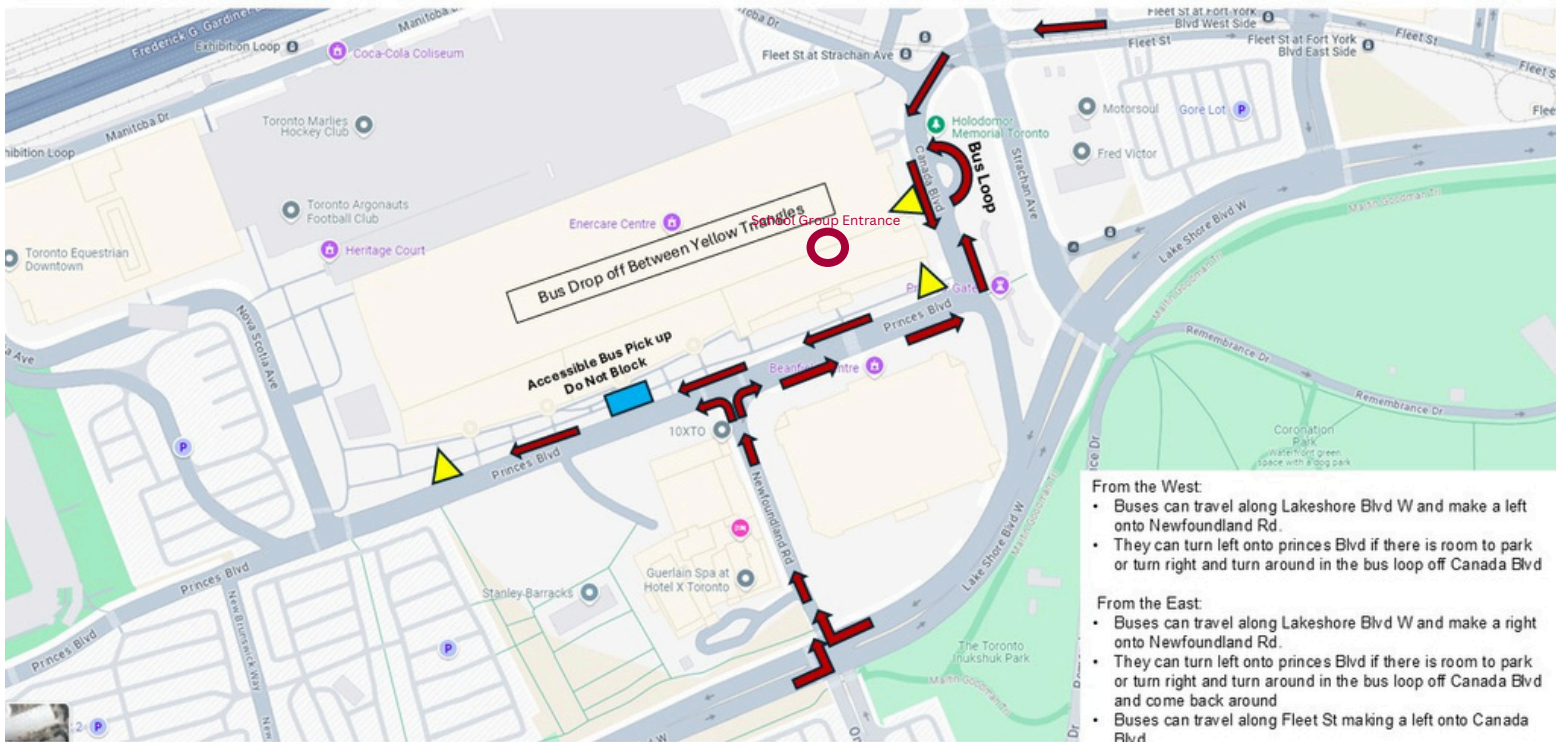
School Group Entrance Maps.....	2
Bus Drop-Off and Parking Maps.....	3
School Group Check-In Process.....	4
Teacher Frequently Asked Questions.....	5
Worksheets and Resources.....	6
Sample Itineraries.....	7
The Royal Scavenger Hunt.....	9
The Growth Hub Stage & Education Symposium..	10
AgScape Programs.....	11

SCHOOL GROUP ENTRANCE & CHECK-IN

Entrance: Hall C Galleria, off of Princes' Blvd



BUS DROP-OFF



Drop off on the North side of Princes' Blvd **ONLY** in front of the Enercare Centre.

If arriving on the South side, please utilize the bus loop.

Students Proceed to Hall C School Group Entrance.

Please do not block the accessible loading area.

Once you have unloaded your students, your driver will receive further instructions.

BUS PARKING

Bus parking will be provided during school visits to The Royal Agricultural Winter Fair.

The lot location may vary each day.

If your driver plans to stay, they should wait for instructions and speak directly with a guard at the Bus Drop Zone to find out where to park for the day.

After parking, drivers can proceed to the School Group Entrance to check in and receive access to The Royal.

FREQUENTLY ASKED QUESTIONS



SECURITY AND FIRST-AID

- Royal Security/ Lost & Found located in Hall A, Salon A2
 - 416-263-3099
- First Aid located between Hall B/C, Salon B2, accessed through the Galleria
 - 416-263-3099

LOST CHILDREN

- Lost children will be brought to The Royal Security office, located in Hall A, Salon A2
 - 416-263-3099
- If you have a lost child, please find a member of Royal Staff, and **stay where you are! Members of The Royal security team will come to escort you.**
- Make sure your cellphone is on - members of the security team may try to reach you.**

BAGS AND COATS

- There are no secure lockers to store bags and coats. If you can, please leave them on your bus, or be prepared to take them with you!

LUNCH

- There will be a space designated for School Group lunches by the School Group Entrance for your class to eat. You are also welcome to eat in the Food Court!
- Seating is first come, first served.

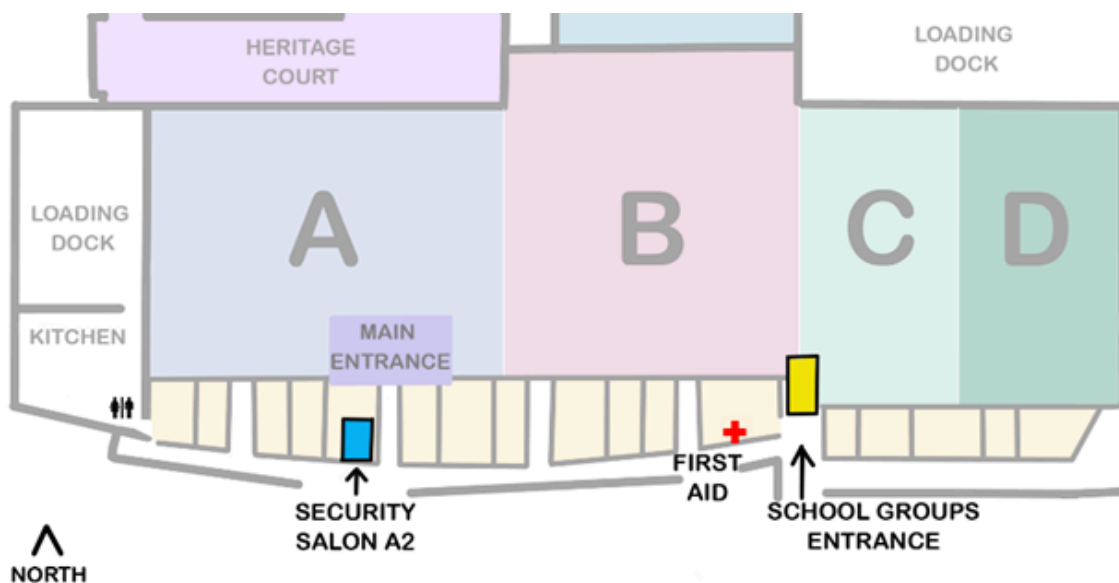
FAIR ETIQUETTE

- Please respect any rules and signs displayed at the Fair
- Walk, don't run
- Make sure students know when and where to regroup
- Treat our space with care and use the garbage bins
- Always wash hands after touching animals
- Only touch animals after getting permission or in designated areas (petting farm)
- Do not feed the animals except with approved food in the petting farm area
- Be respectful of all people and animals
- Teachers:** Take a picture of the students before entering The Fair. If a child gets lost, it can help to know what the child is wearing.

FILMING AND PHOTOGRAPHY

By entering the event premises you consent to being photographed, filmed and/or otherwise recorded, and allow the use of such material to be used by The Royal Agricultural Winter Fair for any promotional purposes.

SECURITY OFFICE MAP



PREPARE FOR YOUR VISIT!

Review the available worksheets and digital resources:

- [A Day in the Life of an Ontario Chicken](#)
- [Exploring Turkeys](#)
- [All About Alpacas](#)
- [Hereford Breed](#)

Select a worksheet or on-site activity, including:

- [Royal Bingo \(English\)](#) [Royal Bingo \(French\)](#)
- [Count the Animals \(English & French\)](#)
- [Royal Geography Assignment \(English & French\)](#)
- [The University of Guelph The Future of Food Career Exploration \(English & French\)](#)
- [The Growth Hub Stage Career Information Sessions \(English & French\)](#)



THE ROYAL SCAVENGER HUNT

Collect all the stamps to be entered to win a prize!

Get ready to play: print your own booklet in advance!



These sample itineraries provide a guide to help you plan a fun and educational visit. With many more activities available and different shows or timings depending on the day, feel free to explore at your own pace and add your own ideas. Let your students' curiosity lead the way!

PRIMARY GRADES (PRE K-3)

9:30 AM: Arrival and Check-In at School Groups Entrance

Welcome to the Royal Agricultural Winter Fair! Get ready for a day of fun and learning!

10:00 AM: Magic Show

Be amazed by a magical performance that will entertain and delight young audiences!

10:30 AM: Animal Theatre-SuperDogs Show

Enjoy the amazing tricks of the Global Pet Foods SuperDogs®! Be sure to arrive early for the best seats.

10:45 AM: Petting Farm

Get up close with friendly farm animals! Kids can pet and interact with animals like goats, bunnies, and sheep.

11:00 AM: Sheep Shearing Demonstration

Learn how sheep are sheared and discover the importance of wool in farming.

11:30 AM: Dairy Education Centre Discovery Experience

Find out where milk comes from, how cows are milked, and the role dairy plays in our everyday lives.

12:00 PM: Lunch (Indoor picnic tables near School Groups Entrance)

Take a break and enjoy lunch at the indoor picnic area.

12:30 PM: 'Farm to Table' Discovery Zone

Explore over 14 Education Centres that tell the story of how food gets from farms to your table. Meet livestock experts, try out egg challenges, and check out the giant vegetable displays!

1:00PM/1:30 PM: Animal Theatre-Horse Demonstrations or Farm & Play Zone

Choose between watching graceful horses in action or heading to the Farm & Play Zone for hands-on fun, where children can run, jump, and play while learning about animals.

2:15 PM: Departure

Time to head back with lots of memories and new things learned about animals and farming!

JUNIOR GRADES (4-6)

9:30 AM: Arrival and Check-In at School Groups Entrance

Welcome to the Royal Agricultural Winter Fair! Get ready for a day of fun and learning.

10:00 AM: Free Horse Show

Witness the beauty and power of horses in action! This exciting show highlights a variety of horse breeds performing impressive feats. From jumping to dressage, you'll get an up-close look at the skills and training of these magnificent animals.

11:00 AM: 'Farm to Table' Discovery Zone

Explore over 14 Education Centres to discover the story of how food gets from the farm to your table. Meet livestock experts, explore virtual reality farms, and be amazed by butter sculptures and giant vegetable displays!

12:00 PM: Lunch (Indoor picnic tables near School Groups Entrance)

Enjoy lunch in the designated picnic area. Take a break and recharge before the afternoon activities.

12:30 PM: Animal Theatre - SuperDogs® Show

End the day with the famous Global Pet Foods SuperDogs®! Watch as these talented dogs perform jaw-dropping tricks and stunts. A fun and exciting way to close your visit!

1:00 PM: Dairy Education Centre Automated Milking Demonstration

Immerse yourself in the world of dairy farming! Visit the freestall cow enclosure with live cows and learn about milking in a state-of-the-art milkhous. Watch educator-led demonstrations on how milk is produced.

1:30 PM: Goats, Lamb, or Sheep Show

Choose to attend one of the animal shows happening throughout the day. From goats to lambs and sheep, these shows offer a unique insight into the world of livestock farming

2:00 PM: Petting Farm

Get up close with friendly farm animals. Take time to interact with goats, sheep, and other animals, perfect for curious minds

2:30 PM: Departure

Head home with new knowledge and memories from a day at the Fair!

INTERMEDIATE GRADES (7-10)

9:30 AM: Arrival and Check-In at School Groups Entrance

Welcome to the Royal Agricultural Winter Fair! Prepare for an exciting day full of interactive learning and discovery.

9:45 AM: 'Farm to Table' Discovery Zone – Language, Geography, and Career Exploration Activities

Explore 14 Education Centres that tell the story of food production. Learn about career opportunities in agriculture, meet livestock experts, explore virtual reality farms, and marvel at the impressive butter sculptures and giant vegetable displays.

10:30 AM: Animal Theatre – SuperDogs® Show

Enjoy the high-energy SuperDogs® Show where talented dogs perform incredible tricks and stunts.

11:00 AM: Lunch n' Learn at the Interactive Growth Hub

Enjoy your lunch while joining this dynamic session hosted by RBC and The Royal. Explore next steps in education and careers within the Agri-Food space and beyond. Listen to engaging keynote speakers, participate in panel discussions, and access professional development tools and workshops to prepare for future career opportunities.

12:00 PM: Petting Farm

Take a break from your educational sessions and spend time interacting with friendly farm animals like goats, sheep, and more.

12:30 PM: Agriculture & Food Workshop

Delve deeper into the world of agriculture through a hands-on workshop. Explore food production processes, sustainable farming, and how agriculture plays a vital role in our daily lives.

1:00 PM: Butter Sculpting Challenge or Dairy Education Centre

Participate in a fun and creative butter sculpting challenge, or take a tour of the Dairy Education Centre where you'll see live cows and learn about dairy farming through milking demonstrations and a tour of a custom-built milk house.

1:30 PM: 'Spirit of the Horse' Show

Celebrate the unique relationship between humans and horses in this captivating show. Watch as various horse breeds perform exciting demonstrations, showcasing their agility, strength, and training, while learning about the important role horses play in agriculture and history.

2:00 PM: Departure

End your day with new knowledge about agriculture and the opportunities within this growing industry.

SENIOR GRADES (11-12) & POST-SECONDARY

9:15 AM: Arrival and Check-In at School Groups Entrance

Welcome to the Royal Agricultural Winter Fair! Take control of your day with a flexible itinerary tailored for independent exploration.

9:30 AM: Visit the Champions Showcase

Start your day by exploring the Champions Showcase, where you can see the winning products from the 2024 food competitions, including butter tarts, jams, cheeses, ice cream, honey, pickles, and more. Get inspired by excellence in food!

9:45 AM: Ring of Excellence Livestock Show

Head to the Coliseum to watch some of the top agricultural shows, featuring breeds like Hereford, Angus, Holstein, and Jersey. Learn about the significance of these animals in farming while witnessing the competition.

10:30 AM: 'Farm to Table' Discovery Zone

Explore the journey of food from farms to your table. With 14 Education Centres, meet livestock experts, see butter sculptures, and immerse yourself in interactive experiences like virtual reality farms.

Flexible Lunch Option (11:00 AM, 12:00 PM, or 1:00 PM): Lunch n' Learn at the Growth Hub Stage

Enjoy your lunch while joining RBC Future Launch for an interactive session that supports your educational and career growth. Attend workshops, hear from keynote speakers, and take part in discussions about future career paths in agri-foods.

1:15 PM: Agriculture & Food Workshop

Deepen your knowledge of food, nutrition, social studies, or health in a hands-on workshop. Learn about sustainable agriculture and its impact on health and the environment.

Explore Other Options:

- [Horse Shows and SuperDogs® Shows \(see schedule\)](#)
- [Education Symposium: Your Future in Food](#)

(11:00 AM - 12:00 PM, Thursday only)

Join Ontario Agricultural College students from the University of Guelph as they share their educational and career pathways in the agri-food industry. Learn about opportunities from plant biology to food science, animal care to environmental policy.

- [Dairy Education Centre](#)

Visit the state-of-the-art milkhouse and freestall cow enclosure. Watch live milking demonstrations and learn about the dairy industry through this immersive experience.

- [Commercial Exhibitors](#)

Explore booths featuring agriculture, food, and lifestyle products. Network with professionals in the industry and discover career and educational opportunities.

2:00 PM: Departure

Wrap up your day with plenty of insights into the agricultural world and new ideas for your future.



SCAVENGER HUNT ACTIVITY

HOW DO I PLAY?

Prepare Your Visit

Passports: Ensure a smooth start by printing your passports in advance from the Online Education Centre. Alternatively, you can pick up printed copies at the Teacher Registration Desk upon arrival.

For Teachers

Exclusive Opportunity: Don't forget to grab an extra passport for yourself at the Teacher Registration Desk. Fill it out on behalf of your class for a chance to win a classroom prize!

Engage and Explore

Scavenger Hunt Adventure: Use your passport as a tool for a self-guided visit through the Fair. Embark on the Scavenger Hunt Activity, leading you and your students to the Fair's Education Partners. Collect stamps at various Education Centres in the Farm to Table Discovery Zone and look for signs with the scavenger hunt logo. Remember, to get some stamps, sometimes you'll need to ask questions from our experts!

Exiting the Fair

For Teachers: Before you leave, drop off your completed passport at the School Group Registration Desk to enter the draw.

For Students: Keep your passport to continue the scavenger hunt educational activities back at school or share your exciting day with parents/guardians.

Prize Submission

Enter to Win: Completed passports, submitted by teachers will be entered into a random draw for our Prize Packs. Prizes include gift cards, sweaters, a drone, and more!

The Royal team will notify the winners via email.

Name: _____

Class: _____

Email: _____

Collect all 14 stamps from each of the scavenger hunt locations around The Fair for a chance to win a prize! Look for the Scavenger Hunt Logo (left) to find the stamps. Bring your completed passport back to the School Groups Registration Desk to be entered to win a prize. **GOOD LUCK!**

GRAIN EDUCATION CENTRE 	THE FUTURE OF FOOD
EGG EDUCATION CENTRE 	HONEY EDUCATION CENTRE

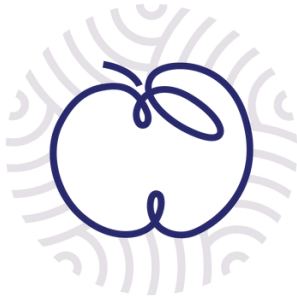
Prizing Supported by:



FOLLOW THE LOGO!

Look for the signs with the Scavenger Hunt Logo! Follow the instructions to find the stamp and collect the badge.





GROWTH HUB STAGE

PRESENTED BY



WHAT WILL I LEARN?

Programming on the Growth Hub Stage will allow youth to learn about jobs and career opportunities in the Agri-Food sector, as well as discover new ways to develop a personal brand and continue their professional development.

PROGRAMMING INCLUDES:



AND MORE!

LEARN MORE ABOUT THE GROWTH HUB STAGE:

<https://www.royalfair.org/education/growth-hub-stage/>



Agriculture & Food Workshop - Local Food

Join AgScape at The Royal for a student agricultural & food education workshop! In this engaging, curriculum-connected workshop, students will explore the topic of local food and learn how their food choices are connected to their environment, community, and their own well-being.

Workshop Description

What does the word “local” really mean when it comes to our food systems here in Ontario? Depending on things like location, season and which foods are readily available, the definition can shift. Learning how to navigate making food decisions includes understanding where your food comes from and identifying what factors are most important to each of us. In this workshop, we will explore these concepts and help students develop food awareness and confidence in the role they play – every day – in Canada’s food system.

Curriculum Connections:

Health & Phys Ed – Making Food Choices, Social & Nutritional considerations when making food decisions.

Food & Nutrition – Understanding food systems (transport, careers, labels, etc.); making food decisions.

Social Studies – Social & Environmental considerations while engaging in the food system and making personal food decisions.



Details

Dates: Running from Monday November 10th- Friday November 14th

Times: 11:30am ,12:30pm, and 1:15pm

Duration: 30 minutes each

Locations: Theatre

Agriculture & Food Workshop - Local Food FAQ

Who is this workshop for?

This workshop is for Gr 4 - 9 students, as well as teachers and educational staff.

Can I sign up for any of the workshop times?

We ask that you please sign up for the time slot that corresponds with your class's grade level. Each session's content will be adapted to suite grade level curriculum expectations, and may become too easy or advanced if signing up for the wrong grade range.

Do I need to stay with my class for the duration of the workshop?

Yes, each class attending must be accompanied by their teacher or adult supervisors for the full duration of the workshop.

What will be students be doing for the workshop?

The workshop entails a 20 minute presentation with a hands on activity portion, as well as a 10 minute block for Q & A.

Who are the presenters leading the workshop?

Skilled and experienced Ontario educators from the AgScape team will be leading the workshops with your students. They have a wide range of experience in agricultural education, and would be happy to answer any questions attending teachers may have on how to extend agriculture and food education in their own classrooms.

Educator Professional Development Workshop

Join AgScape at The Royal for a FREE educator professional development workshop. Learn about the various ways agriculture and food can be brought into your classroom, no matter what the grade or subject focus!



Workshop Description

How can we connect students to local agriculture and food, regardless of location? Why is it important for students to understand where our food is coming from, and what food and products Ontario is producing?

Join us as we deep dive into the importance of bringing agriculture into the classroom based on a social, economic, and environmental lens, and examples of ways you can incorporate agriculture into your teaching practice. Agriculture and food, although not always specified in the Ontario Elementary and Highschool curriculum, can be connected to various subjects in school, even if not obvious. No matter where you teach in Ontario, there's a way to connect students to their community through food and farming.

Educators + guest gain free admission on Sunday November 9th!
Join us for some learning and fun.

Details

Dates: Sunday November 9th

Times: 10:30am

Duration: 45 minutes

Locations: Theatre